

 **OPTIPAC VMC-12**
Modular Process-control System

| |
|-------------|
| Measurement |
| Control |
| Automation |

Touchscreen displays

OPTIPAC VMC-12

View of main display

The user-interface is divided into 5 sections:

- 1) Header bar: sundry information (inclusive of alarm bar)
- 2) Display section: optional screen pages (types of display)
- 3) Options block: control zone to help navigate (move around) the program
- 4) Vertical block: control buttons for main options
- 5) Horizontal block: control buttons for basic functions and sub-options



View of combi-display

- Clearly arranged display of all working control systems.
- The combi-display indicates in bar graphics the target settings and readouts associated with each module.
- The screen's display section is arranged and supplied in a standard form, but it can be modified on request to meet individual customer requirements.



Typical sundry settings:

Language option:

- audio response of software text in 23 languages





—
—

—
—

—
—

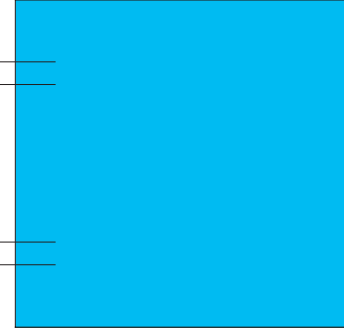
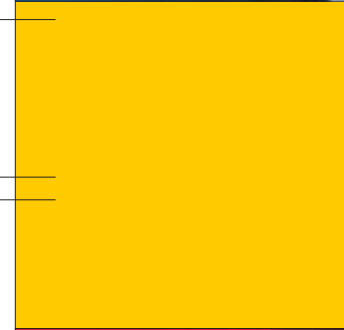
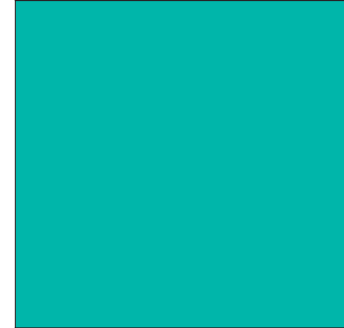
—
—

—
—

—
—

—
—

—
—



The modules at a glance!

(You will find detailed information in the insert!)

The following parameters can be measured and controlled within the limits of the on-site manipulated variables:

| Module | Measured variable | Controlled variable |
|----------------|----------------------|---|
| ECOMAT AML | Exhaust humidity | Exhaust fan rpm, damper opening |
| PERMASET VMT | Dwell-time | Cloth line-speed |
| THERMOSET OMT | Surface temperature | do |
| ELOTEx DMG | Stretch/shrinkage | Overfeed |
| GRAVIMAT FMI | Weight per unit area | Overfeed, doctor blade, line<speed |
| TEXTOMETER RMS | Moisture retention | Cloth line-speed |
| AQUALOT HMF | Liquor pick-up | Nip pressure |
| INFRALOT IMF | Moisture retention | Line-speed, exhaust fan rpm, damper opening |
| FAMACONT PMC | Pick count | Overfeed |

Optional extras:

- Host-computer interface link
- Remote diagnostics system
- Alarm output
- Analog output
- External tacho input 0-10V DC
- Printer package

Innovation and development

In a effort to guaratee the effectiveness of and highest possible customer-returns on its products, Mahlo®, with the help of the very latest technology, is avidly devoted to designing the products of tomorrow. The commercial efficiency and flexibility of its systems are the first essentials.

Please get in touch with us. We would gladly provide more information on our objectives and timing.

Mahlo – trendsetting technology. worldwide.



mahlo
trendsetting technology. worldwide.

Touchscreen displays

OPTIPAC VMC-12

View of main display

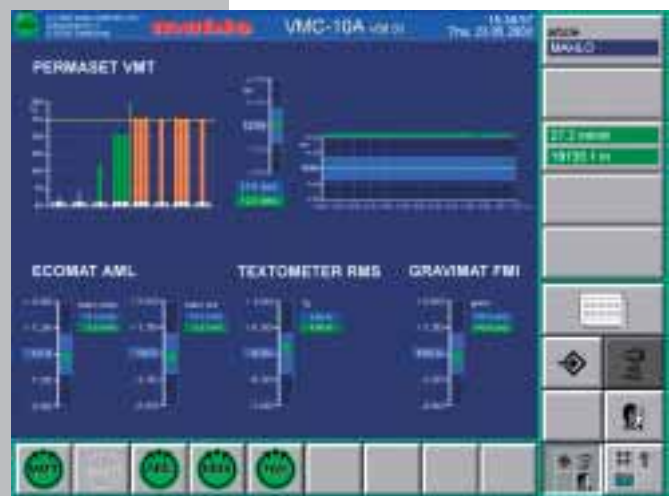
The user-interface is divided into 5 sections:

- 1) Header bar: sundry information (inclusive of alarm bar)
- 2) Display section: optional screen pages (types of display)
- 3) Options block: control zone to help navigate (move around) the program
- 4) Vertical block: control buttons for main options
- 5) Horizontal block: control buttons for basic functions and sub-options



View of combi-display

- Clearly arranged display of all working control systems.
- The combi-display indicates in bar graphics the target settings and readouts associated with each module.
- The screen's display section is arranged and supplied in a standard form, but it can be modified on request to meet individual customer requirements.



Typical sundry settings:

Language option:

- audio response of software text in 23 languages





Mahlo GmbH + Co. KG

Donaustr. 12, 93342 Saal/Donau, Germany
Tel.: +49-9441-601-0; Fax: +49-9441-601-102
Internet: <http://www.mahlo.com>
e-mail: info@mahlo.com

Mahlo America Inc.

P.O. Box 2825, Spartanburg, S.C. 29304, USA
Tel.: +1-864-576-62 88; Fax: +1-864-576-00 09
e-mail: mahlo.america@mahlo.com

Mahlo Ouest S.A.R.L.

18, rue de Jura, 68391 Sausheim Cedex/France
Tel.: +33-389-61 76 61; Fax: +33-389-61 78 40
e-mail: mahlo.ouest@mahlo.com

Mahlo Italia S.R.L.

Via Fiume 62, 21020 Daverio/Italy
Tel.: +39-0332-94 95 58; Fax: +39-0332-94 85 86
e-mail: mahlo.italia@mahlo.com

Mahlo España Sistemas de Regulación y Control S.L.

Calle Antoni Falguera, 21
E-08181 – Sentmenat (Barcelona), Spain
Tel: + 34-93-715-3701
Fax: +34-93-715-3702
e-mail: mahlo.espana@mahlo.com

Mahlo Asia Ltd.

764 Thedsaban Nimit Nua Road, Soi 24, Prachanivete 1,
Ladyaw, Chatuchak, 10900 Bangkok, Thailand
Tel: +66-2-954-48 83; Fax: +66-2-954-42 56
e-mail: mahlo.asia@mahlo.com

We safeguard quality

With over 40 service centres around the world, we guarantee a prompt response to calls for service from our customers, and delivery of spare parts within 24 hours.

With the help of the remote diagnostics facility, Mahlo® technicians can, by telephone, log onto the software of customers' systems in order to resolve minor problems or make service-related settings.

Mahlo – service – we are very near at hand should you need us!