



## WebPro M

WebPro M traversing scanners are found on a wide variety of web processing applications in an assortment of industries, and are legendary for their robust construction and superior reliability providing a low cost of ownership. Scanners of this type can handle products of up to 4 meters in width with up to a total of 3 different measurement sensors. Their compact design and ultra-precise traverse mechanisms enable them to be installed even where space is at a premium and at any angle to suit the given product / web flow.

Potential applications range from nonwoven production lines, coating lines for textiles, paper, film or floor coverings, to installations involved with the manufacture of artificial leather and extruded cast and / or calendared film or sheet.

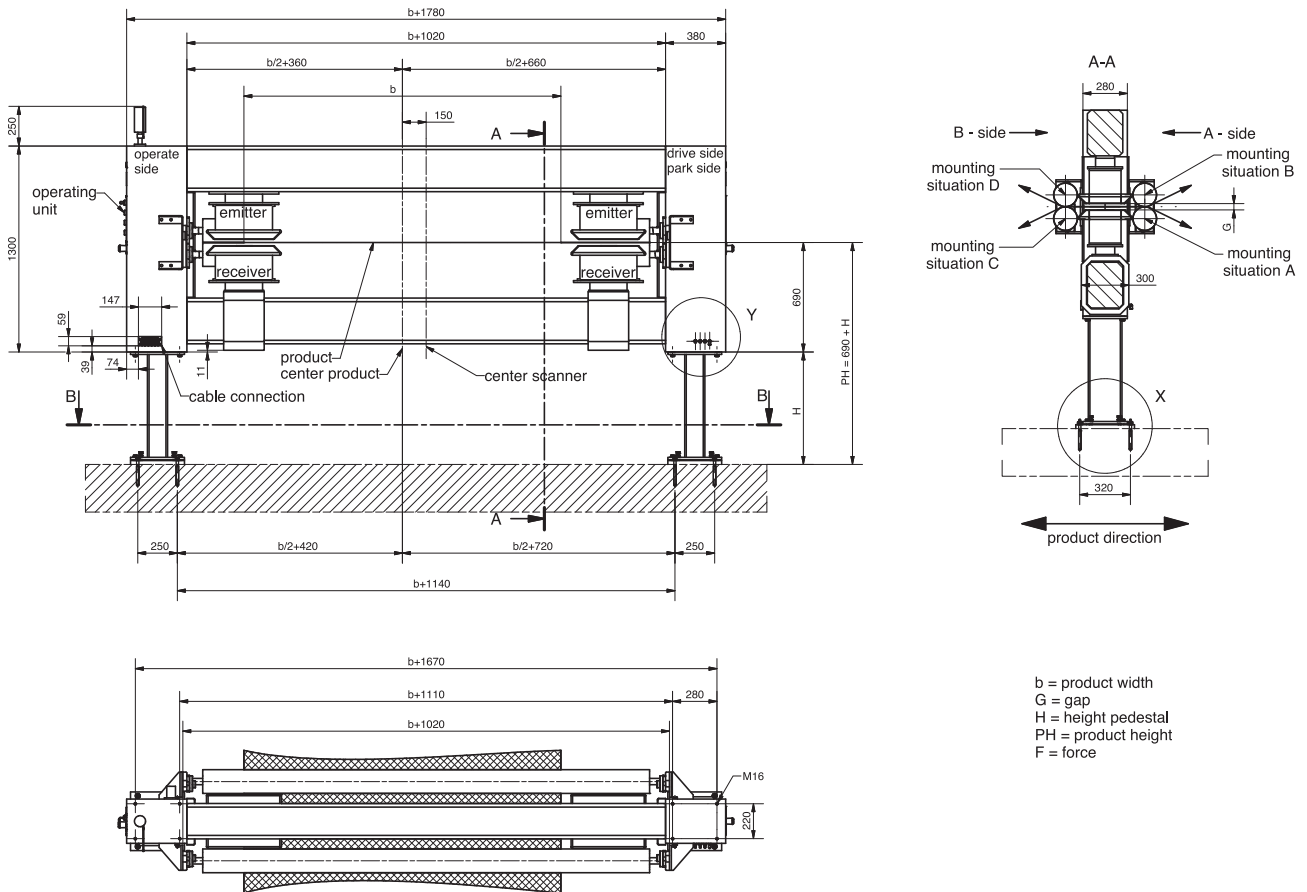
## Product-highlights

- ✓ Intelligent scanning frame with integrated real-time computer
- ✓ Extremely rugged, mechanical construction assures trouble-free operation and long service life
- ✓ Maintenance-friendly design
- ✓ Available in several versions, tailored for the specific application
- ✓ Constructed with commonly available standard components to ensure optimum availability of replacement parts

## TECHNICAL DATA | WEBPRO M

Scanning frame	WebPro M
Scanner width	Web width: 800 – 4000 mm
Scanning speed	20 – 300 mm/s
Sensor payload	Three sensors, both upper and lower carriages
X-, Y-, Z-axis runnout	X (scan axis [CD]), < 300 μ (< 0.3 mm) Y (machine axis [MD]), < 100 μ (< 0.1 mm) Z (vertical axis), < 150 μ (< 0.15 mm)
Scan location repeatability	± 250 μ (± 0.25 mm)
Operating temperature (without cooling)	0 – 45 °C
Cooling scanning frame	Air purging with cooled compressed air
Cooling sensors	Scanner is plumbed as standard for compressed air or liquid cooling (some components optional)
Intrinsic safety	1. Air purging to meet class 1, division 1 requirements U.S. National Electric Code (optional) 2. Purging & pressurization for explosion proof environments, according to ATEX zone 1 or zone 2, category 2
High corrosion environment	Full stainless steel protective covers available (optional)
Power	230 V AC, 50 Hz or 115 V AC, 60 Hz (to be specified with order)
Interface	TCP/IP (Ethernet)

## Dimensions



Measuring frame WEBPRO M  
91-015450



### PERSONALITY

You're not just a number to us. Your individual needs and special requirements are our highest priority. We are there for you with our expertise, trend-setting technology and full dedication. So you can always play to win.